

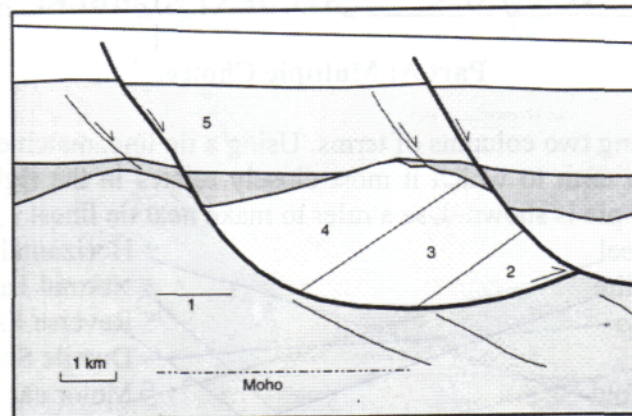
2a: The portion of the curve marked 'x' represents:

- a. hysteresis loop b. strain hardening ☒ c. faulting d. yield strength
e. elastic limit (1 mark)

2b: The portion of the curve marked 'y' represents:

- a. hysteresis loop b. strain hardening ☒ c. faulting d. confining pressure
☒ e. elastic limit (1 mark)

Question 3: Examine the cross-section below, which is an interpretation of an offshore seismic survey, and shows sequences of sedimentary rocks adjacent to normal listric growth faults:



3a: The area labelled '3' represents:

- a. post-tectonic sedimentary sequence b. tectonic melange ☒ c. pre-tectonic sedimentary sequence d. syntectonic sedimentary sequence e. autochthonous rocks
(1 mark)

3b: The area labelled '4' represents:

- a. post-tectonic sedimentary sequence ☒ b. syntectonic sedimentary sequence c. pre-tectonic sedimentary sequence d. tectonic melange e. allochthonous rocks
(1 mark)

3c: The area labelled '5' represents:

- a. autochthonous rocks b. syntectonic sedimentary sequence ☒ c. pre-tectonic sedimentary sequence d. tectonic melange ☒ e. post-tectonic sedimentary sequence
(1 mark)